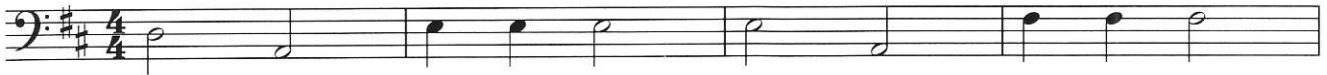


A Jungle Jamboree

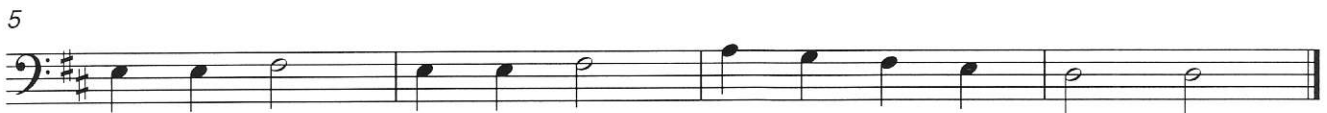
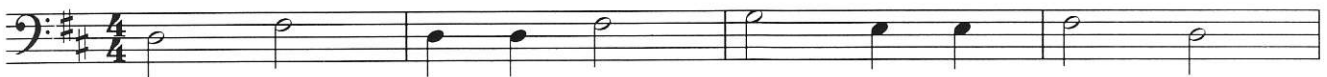
Unaccompanied Pieces for the Beginner Bassist

Tony Osborne

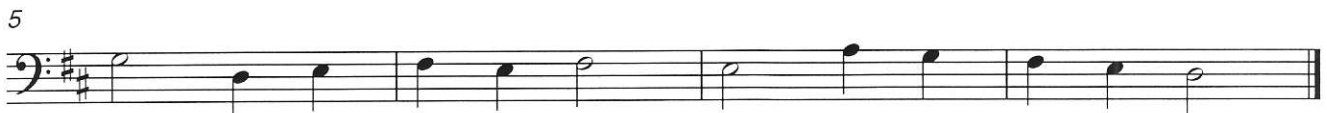
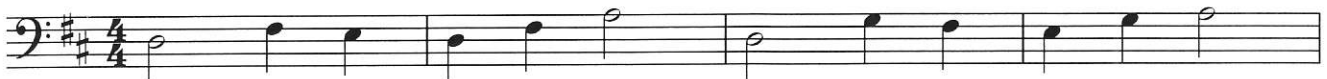
1. ELEPHANT STEPS



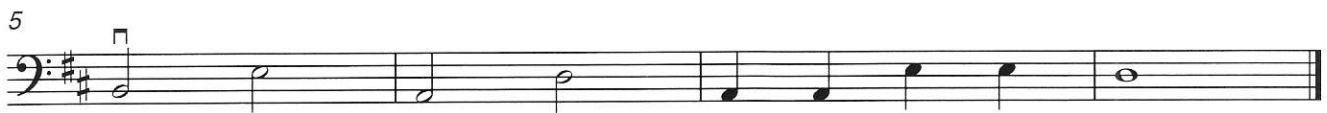
2. A TRUNK CALL



3. GLORIOUS MUD



4. AN AFRICAN ADVENTURE



10. BABY ELEPHANT WALTZ



11. HOPPING HIPPOS



12. THE TIGER TROT



16. THE WATERHOLE WALK

Musical score for 'The Waterhole Walk' in bass clef, 2/4 time signature. The piece consists of four staves of music. The first staff begins with a treble clef and a 7-measure rest, followed by a series of eighth and quarter notes. The second staff starts at measure 6 and continues the melodic line. The third staff starts at measure 11 and features several slurs and accents. The fourth staff starts at measure 16 and concludes the piece with a final note and a double bar line.

17. JUNGLE JAPES

Musical score for 'Jungle Japes' in bass clef, 2/4 time signature, with a key signature of two sharps (F# and C#). The piece consists of four staves of music. The first staff begins with a treble clef and a 7-measure rest, followed by a series of eighth and quarter notes. The second staff starts at measure 7 and continues the melodic line. The third staff starts at measure 13 and features several slurs and accents. The fourth staff starts at measure 19 and concludes the piece with a final note and a double bar line.

18. THE CROCODILE CRAWL

Musical score for 'The Crocodile Crawl' in bass clef, 2/4 time signature, with a key signature of one flat (Bb). The piece consists of three staves of music. The first staff begins with a treble clef and a 7-measure rest, followed by a series of eighth and quarter notes. The second staff starts at measure 7 and continues the melodic line. The third staff starts at measure 12 and concludes the piece with a final note and a double bar line.

22. MONKEY MANIA

Musical score for '22. MONKEY MANIA' in bass clef, 2/4 time signature. The score consists of three staves. The first staff begins with a 'V' marking above the first measure. The second staff starts with a measure number '8' above the first measure. The third staff starts with a measure number '13' above the first measure. The music features a rhythmic pattern of eighth and sixteenth notes.

23. THE HAPPY HIPPO

Musical score for '23. THE HAPPY HIPPO' in bass clef, 3/4 time signature. The score consists of seven staves. The first staff begins with a 'V' marking above the first measure. The second staff starts with a measure number '5' above the first measure. The third staff starts with a measure number '9' above the first measure and has a 'V' marking above the first measure. The fourth staff starts with a measure number '12' above the first measure. The fifth staff starts with a measure number '15' above the first measure and has a 'V' marking above the first measure. The sixth staff starts with a measure number '19' above the first measure. The seventh staff starts with a measure number '22' above the first measure. The music features a rhythmic pattern of eighth and sixteenth notes.